



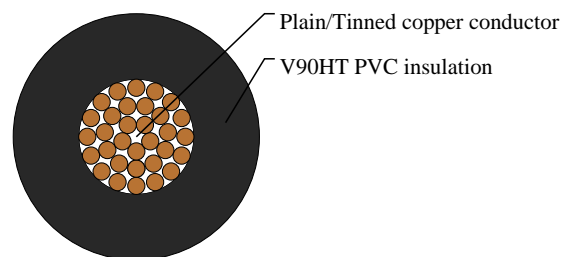
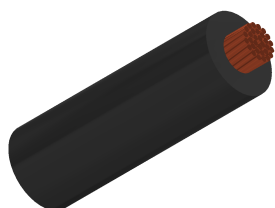
# Caledonian

Industrial Cables (Australian Standard Low Voltage)

[www.caledonian-cables.com](http://www.caledonian-cables.com)

[marketing@caledonian-cables.com](mailto:marketing@caledonian-cables.com)

## Single Core V90HT 0.6/1kV



## APPLICATIONS

These cables are for electrical Interconnections.

## STANDARDS

AS 3191

AS 1125

AS 3808

## VOLTAGE RATING

0.6/1kV

## CABLE CONSTRUCTION

Conductor: Tinned copper wire (TCW) or plain copper wire (PCW) to AS1125

Insulation: V90HT PVC AS3808

## COLOUR CODE

Colours: Red, Blue, Green, Yellow, White, Black, Brown, Violet, Orange, Grey

## TECHNICAL CHARACTERISTICS

Nom. Cross-Section Area	AMP Rating	Electrical Resistance @20°C (TCW)	Electrical Resistance @20°C (PCW)
mm <sup>2</sup>		Ohm/km	Ohm/km
1	10	20	19.5

## DIMENSION AND PARAMETERS

No. of Cores × Cross-sectional Area	No./Nominal Diameter of Strands	Nominal Insulation Thickness	Approx. Overall Diameter	Approx. Weight
No.×mm <sup>2</sup>	no./mm	mm	mm	kg/km
1x1	32/0.2	0.8	3	1.7